

PS87 PRO

PROFESSIONAL DEGREASING CLEANING AGENT

Concentrated cleaner, degreaser and wax remover. Suitable for the initial washing of acid-sensitive materials.



5 litres

1 litre

CHARACTERISTICS AND ADVANTAGES

- Degreasing and wax-removing action
- Free of EDTA, ammonia and caustic soda
- Contains ingredients that are biodegradable up to 98%
- Compatible with the HACCP protocol
- Does not ruin metal (steel and aluminium) profiles

MATERIALS

PORCELAIN TILES, UNPOLISHED STONE, AGGLOMERATES, GLAZED CERAMIC TILES, CONCRETE, LINOLEUM, PVC, TERRACOTTA, QUARRY TILES

FIELDS OF APPLICATION

- Removes old wax layers.
- Degreases surfaces with dirt build-up and oil and grease stains.
- Effectively removes patinas caused by inappropriate maintenance or the use of unsuitable cleaners, resulting in streaks, stains and residue on porcelain and ceramic tile.
- Post-installation and end-of-construction cleaning of unpolished acid sensitive materials such as marble, natural stone and agglomerates, concrete and cement tile.
- For special cleaning of resilient flooring (PVC, LVT, linoleum and rubber).
- Suitable for cleaning in conformity with the UNI 11493:2016-1 standard.

INSTRUCTIONS

Dilution: depending on the required use.

For cleaning and degreasing all surfaces:

dilute in water **PS87 PRO** (1:10-1:20) and apply on the surface. Leave to act for 4-5 minutes before brushing with a single-disc floor scrubber or scrubbing brush. Use a cloth or liquid vacuum cleaner to clean any residues and then rinse thoroughly. For a more vigorous cleaning, dilute 1:5.

To remove stains from porcelain stoneware:

pour undiluted onto the stain and the entire tile. Leave to act until fully dry, then wash and rinse the surface.

To remove wax:

dilute 1:5, apply on the surface and leave to act for 10 minutes. Clean using a scrubbing brush or single-disc floor scrubber. Use a cloth or liquid vacuum cleaner to clean any residues and then rinse thoroughly.

WARNINGS

Do not use on new marble and polished stone. Do not use on wood. Do not use on methacrylate bathtubs. Linoleum: carry out a spot test beforehand to check colour fastness.

Storage temperature: from 5°C to 30°C. The product should be applied on materials at a temperature between 5°C and 30°C.

PS87 PRO

PROFESSIONAL DEGREASING CLEANING AGENT

TOOLS FOR APPLICATION



SINGLE-DISC
CLEANER



LIQUID VACUUM
CLEANER



SCRUBBING
BRUSH

The tools can be cleaned with water.

TECHNICAL SPECIFICATION

Concentrated alkaline detergent (pH: 10.8; density: 1.010 kg/l), contains soap under 15%, for cleaning. Compatible with the HACCP protocol. Suitable for horizontal or vertical surfaces, both indoors and outdoors. For materials that are resistant to or compatible with alkaline detergents.



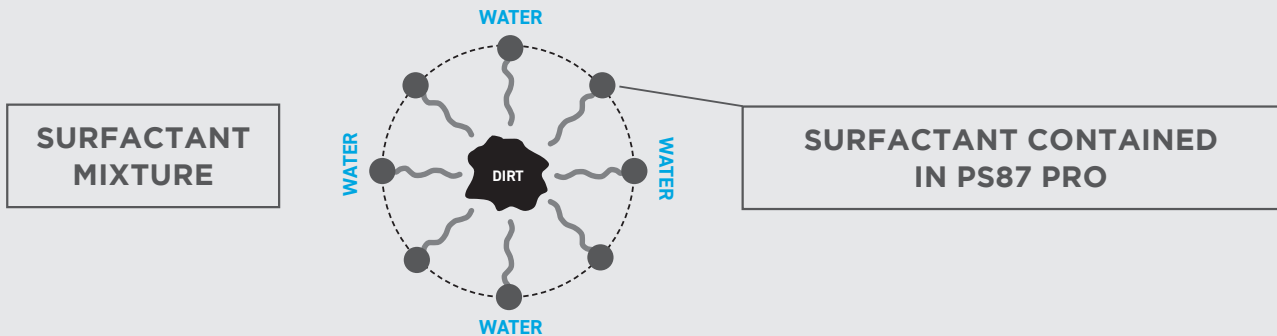
TECHNICAL TESTS

HOW IT WORKS

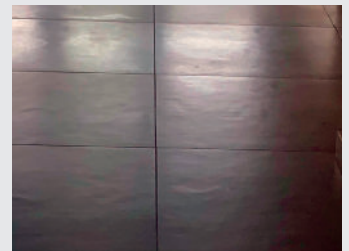
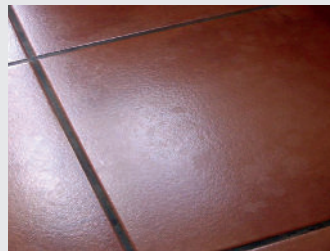
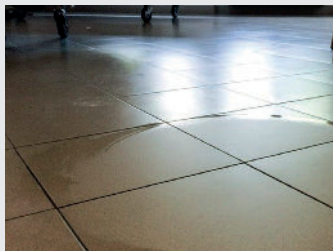
As a wax remover: attacks the waxy layer so that the film can dissolve.

As a degreaser: the combined action of surfactants, water-soluble solvents and the alkaline component breaks up the dirt, allowing it to be easily and quickly removed.

As a porcelain tile cleaner: dissolves dirt and stains, restoring the floor to its original appearance.



If the ceramic surface was not properly maintained, it may have residues that cause stains and streaks which cannot be removed with ordinary maintenance procedures. To solve the problem, we suggest using **PS87 PRO**.



ENVIRONMENTAL IMPACT

- Contains ingredients that are biodegradable up to 98% in accordance with Regulation (EC) 648/2004
- Free of EDTA and phosphates
- Free of ammonia and caustic soda
- Concentrated formula
- Effective with water at low temperatures
- Contains EPA-compliant surfactants

PS87 PRO

PROFESSIONAL DEGREASING CLEANING AGENT



TECHNICAL FEATURES

COMPOSITION	Soap content below 15% and other water-soluble solvents
APPEARANCE	Yellowish liquid
ODOUR	Pine fragrance
DENSITY	1.010 kg/l
pH	10.8
STORAGE TEMPERATURE	From 5°C to 30°C
APPLICATION TEMPERATURE	From 5°C to 30°C
VOC (volatile organic compounds) (Directive 1999/13/EC)	20.02%



COVERAGE AND DILUTION (1 litre)

MAINTENANCE 1:20	200 m²
WAX REMOVAL 1:5	20 m²
INITIAL STONE WASH 1:5	30 m²

Coverage rates are indicative.

*Indicative time that varies depending on the environmental conditions and on the material



FORMATS

1 litre: 12-piece cartons.

5 litres: 4-piece cartons.

On request:

100-litre drums

1,000-litre cubes



SAFETY TIPS

Keep out of reach of children. Do not disperse into the environment after use. The product is classified as dangerous under Regulation 1272/2008 (CLP) and subsequent amendments and supplements. For safety-related information, please refer to the safety data sheet available on the website www.filasolutions.com and carefully read the product's label.



download



FILA Industria Chimica S.p.A.
Via Garibaldi, 58 - 35018
S. Martino di Lupari (PD) - ITALY
t +39 049 9467300
e info@filasolutions.com

The recommended instructions and application procedures for our products are the result of accurate tests carried out in our laboratory. There are, however, certain factors that we cannot predict: the condition of the surface before the treatment, particularly rare or unspecified properties/finishes of the material, environmental conditions, and the professionalism of the user. This is why we recommend carrying out a preliminary test on the surface to be treated. FILA always guarantees the quality of its products, but it cannot assume any responsibility in the event of incorrect use.

REV. 00 - 02/04/2023